

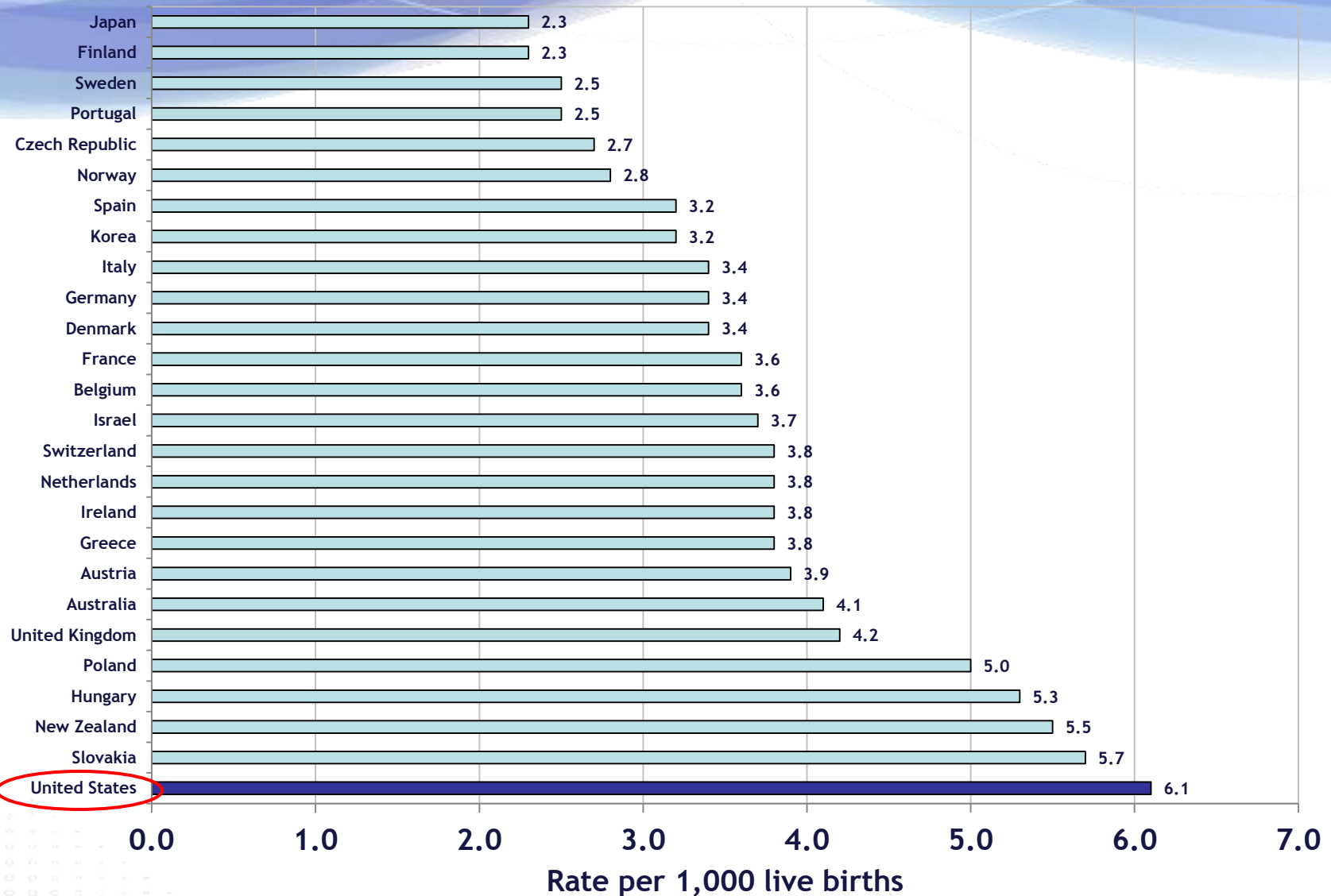
State of the State: Infant Mortality in Indiana

**Jerome Adams, MD, MPH
State Health Commissioner
Indiana State Department of Health**



**Indiana State
Department of Health**

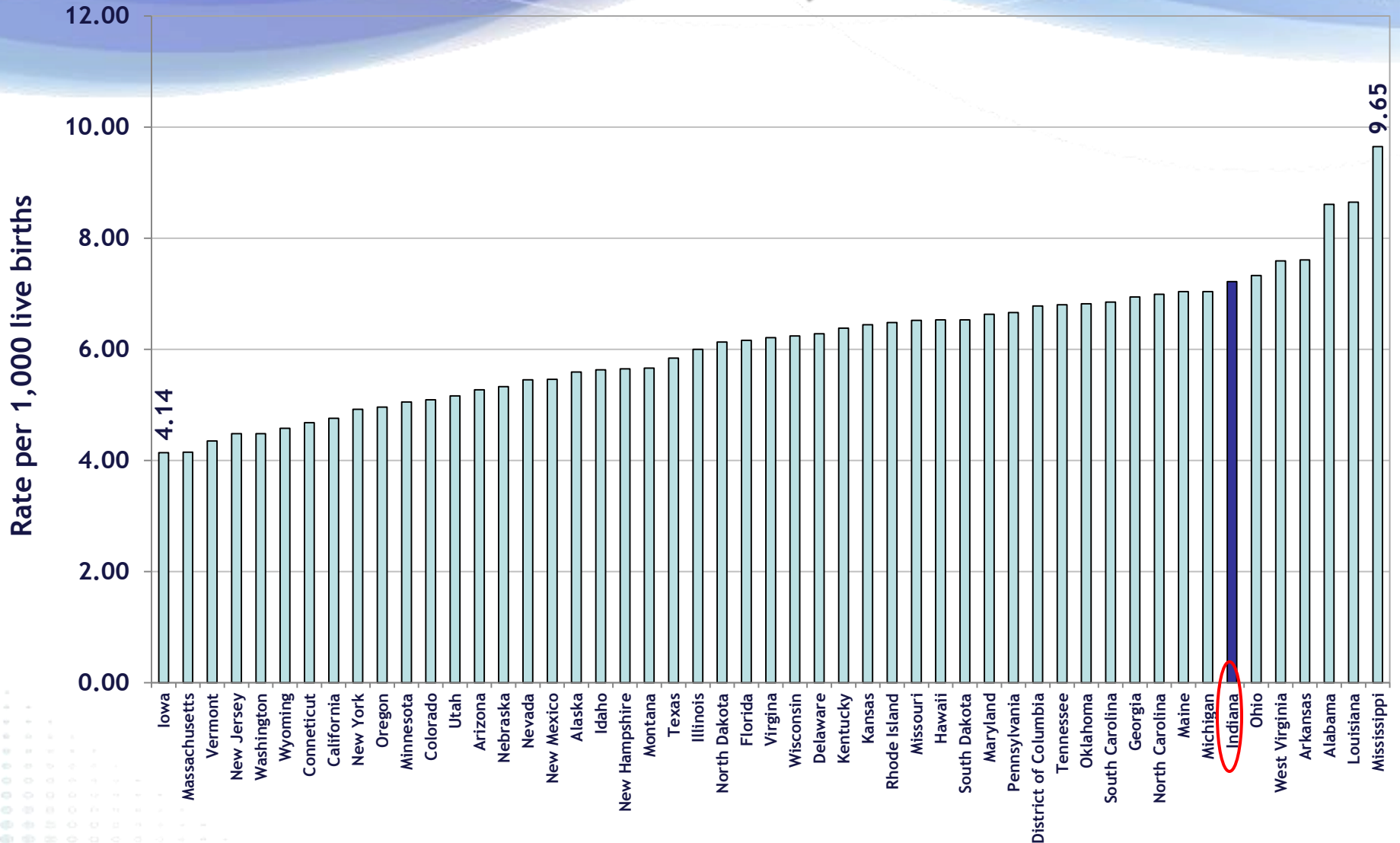
International Infant Mortality Rates 2010



Source: Indiana State Department of Health, Maternal & Child Health Epidemiology Division [October 26, 2015]

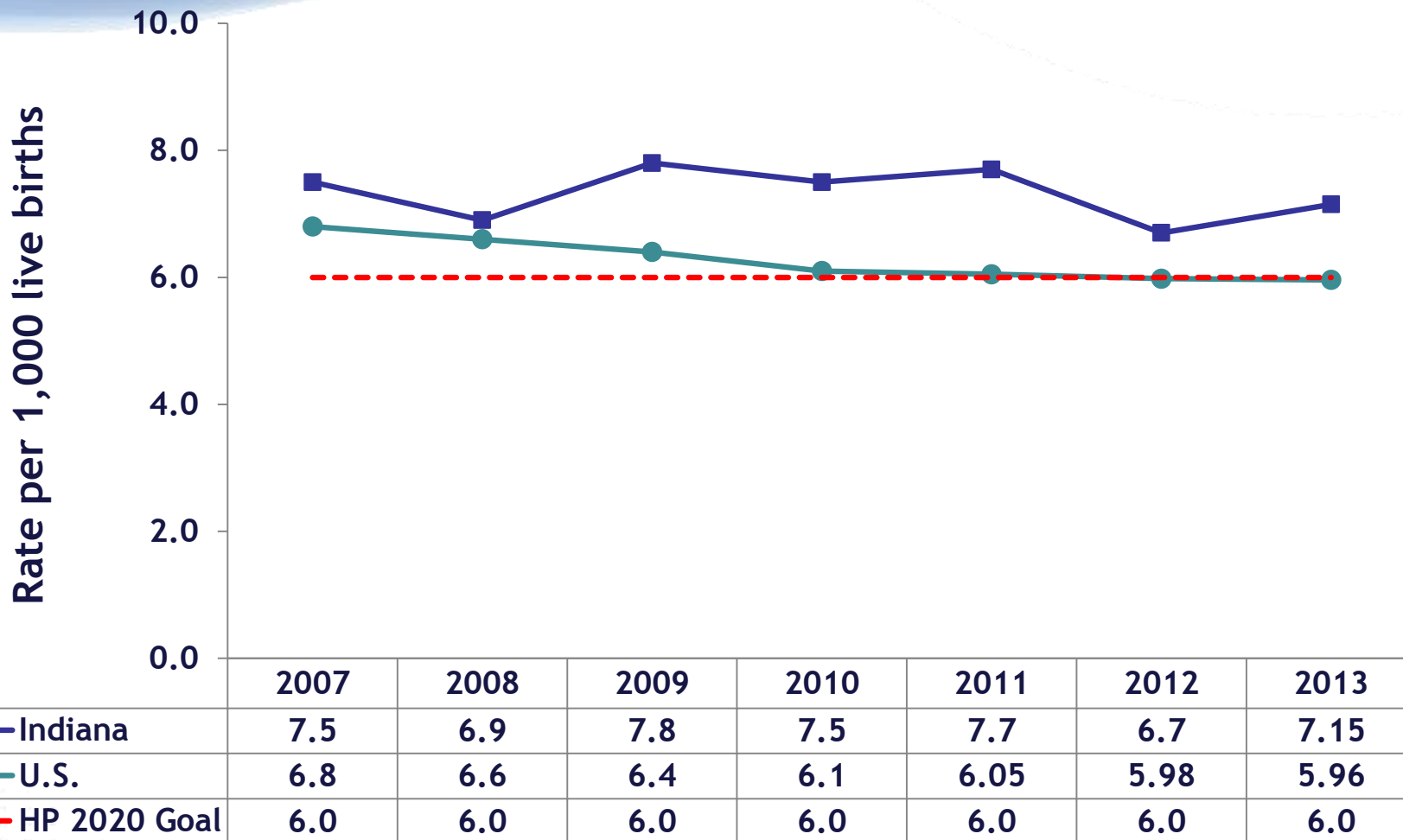
Original Source: CDC/NCHS, linked birth/infant death data set (U.S. data); and OECD 2014 (all other data). Data are available from <http://www.oecd.org>

Infant Mortality Rates United States, 2013



Infant Mortality Rates

Indiana, U.S. and Healthy People 2020 Goal 2007 - 2013

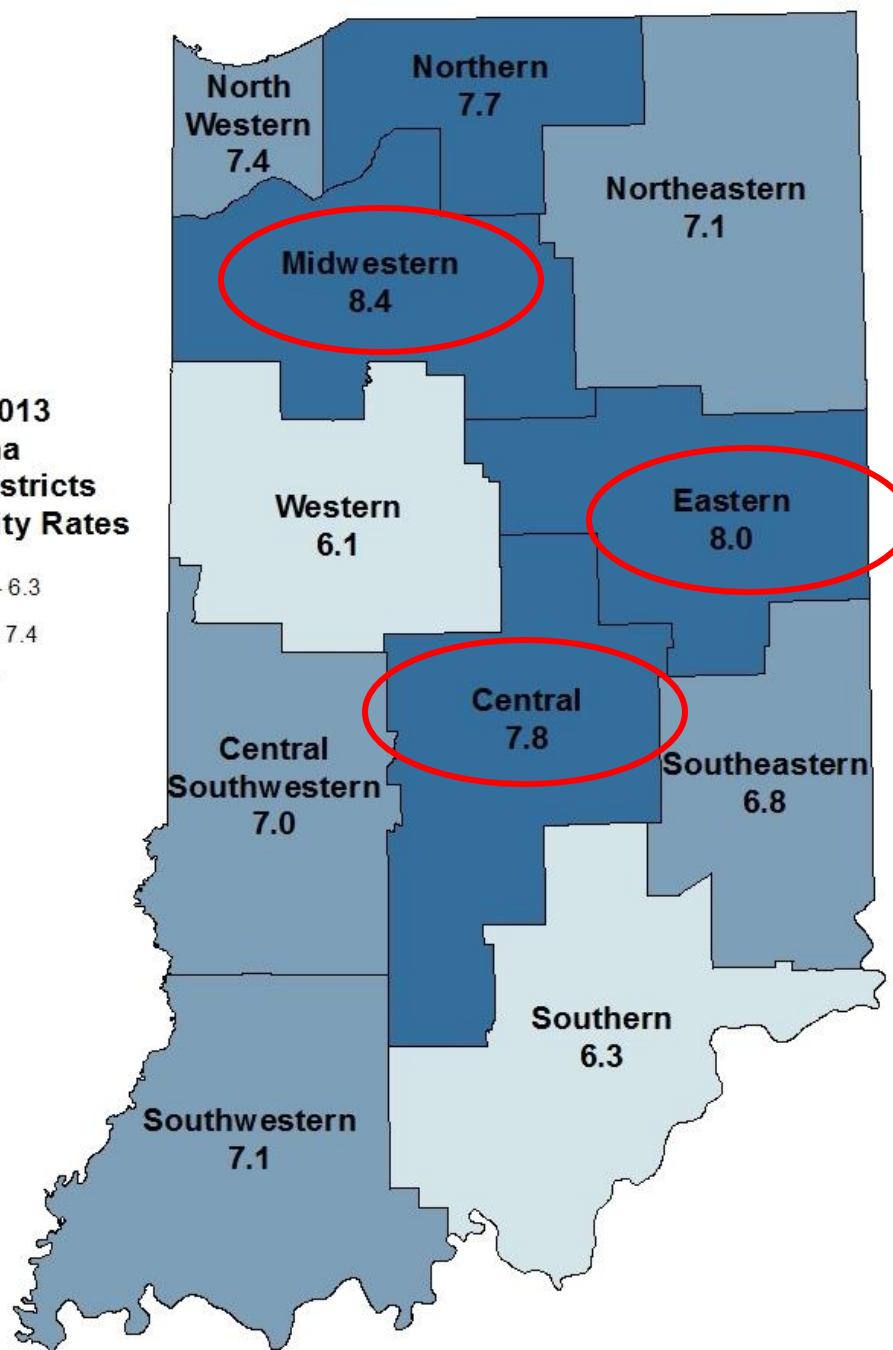


Source: Indiana State Department of Health, Maternal & Child Health Epidemiology Division [October 26, 2015]

United States Original: Centers for Disease Control and Prevention National Center for Health Statistics

Indiana Original Source: Indiana State Department of Health, PHPC, ERC, Data Analysis Team

**2009 - 2013
Indiana
Hospital Districts
Infant Mortality Rates**

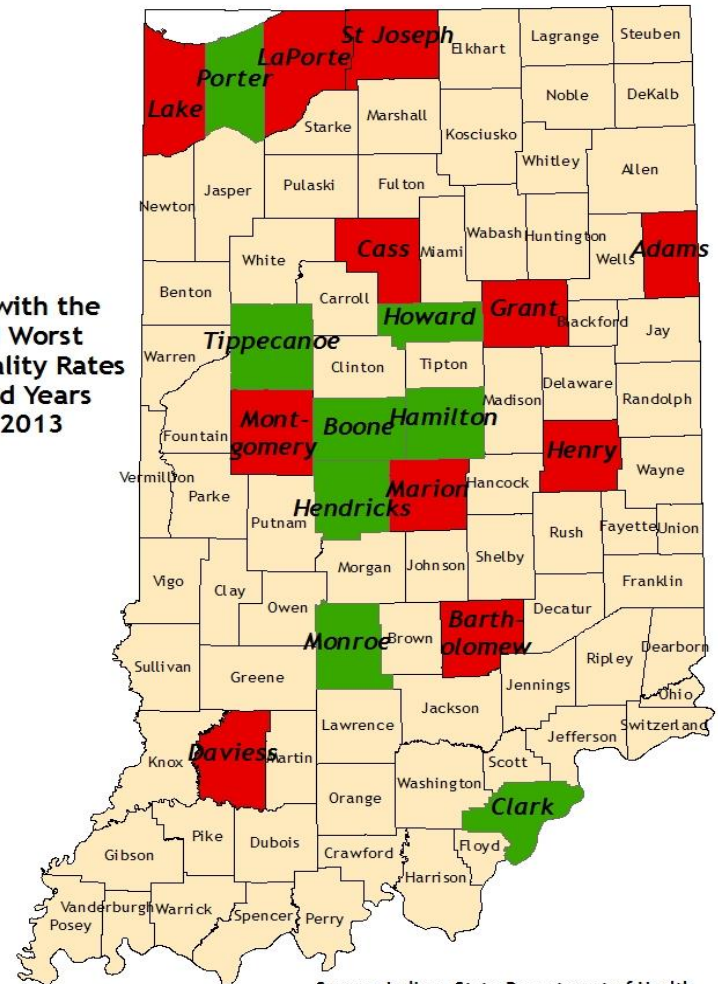


Infant Mortality Rates County Level, All Races 2009 - 2013

HIGHEST Infant Mortality Rates in State

- Adams, 9.9
- Henry, 9.8
- Montgomery, 9.7
- Grant, 9.5
- Marion, 9.5
- Daviess, 9.5
- Cass, 9.2
- Bartholomew, 9.1
- LaPorte, 8.6
- Lake, 8.5
- St. Joseph, 8.2

Counties with the Best and Worst Infant Mortality Rates Aggregated Years 2009 - 2013



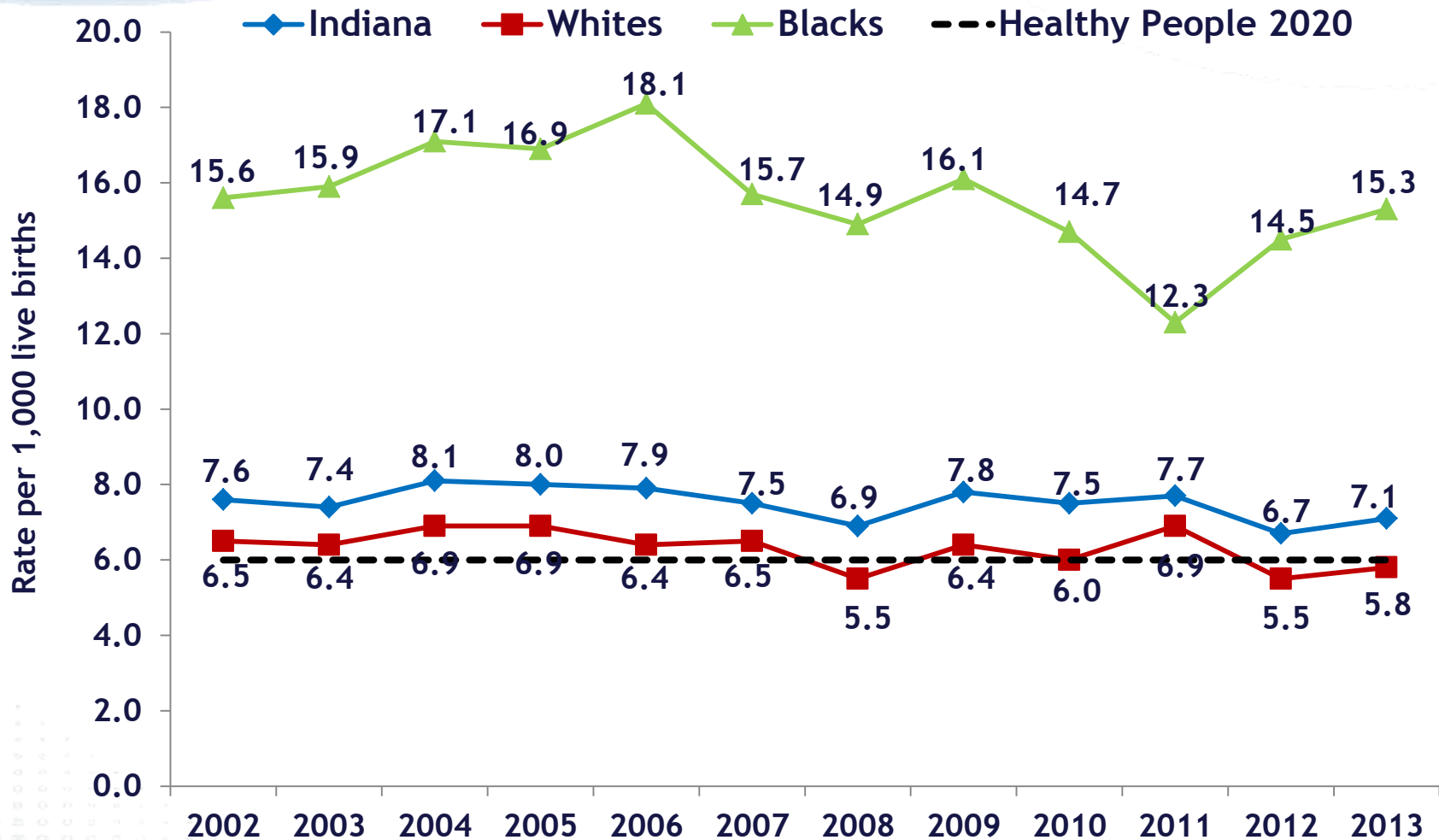
Source: Indiana State Department of Health
Division of Maternal and Child Health Epidemiology
October 28, 2015

Infant Mortality Rates by Zip Code 2009 - 2013 Combined, All Races

**Zip codes with the highest Infant Mortality Rate for the 5 years
among zip codes that had at least 20 infant deaths.*

Zip Code	County	# Total Infant Deaths	Infant Mortality Rate
46806	Allen	37	15.3
46312	Lake	39	15.1
46218	Marion	36	14.7
46201	Marion	44	14.6
46208	Marion	22	14.5
46226	Marion	50	14.4
46953	Grant	20	13.7
46203	Marion	42	12.2
46222	Marion	38	11.6
46205	Marion	28	11.6

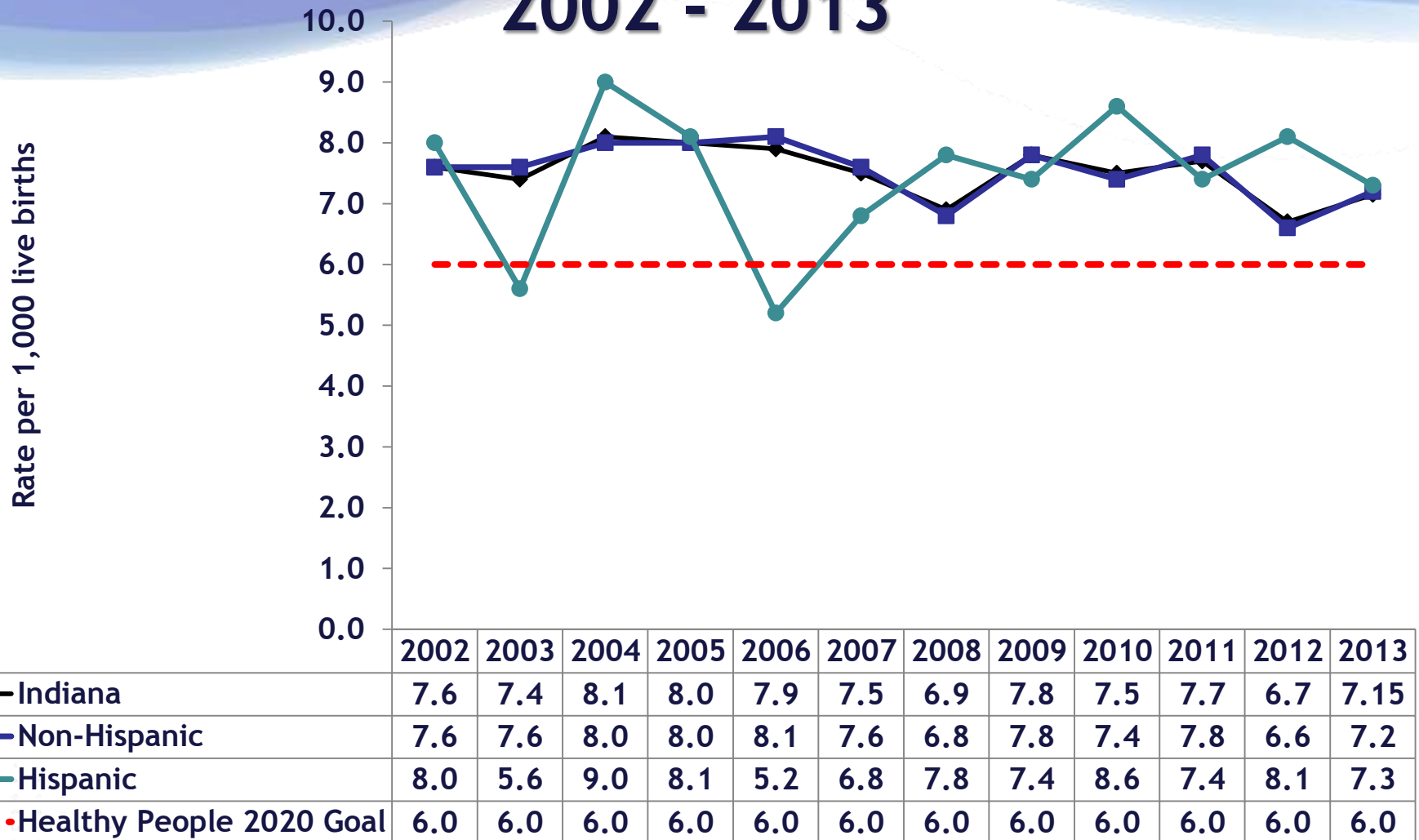
Infant Mortality Rates by Race Indiana 2002 - 2013



Source: Indiana State Department of Health, Maternal & Child Health Epidemiology Division [October 26, 2015]

Indiana Original Source: Indiana State Department of Health, PHPC, ERC, Data Analysis Team

Infant Mortality Rates by Ethnicity Indiana 2002 - 2013



Note: Hispanic ethnicity can be of any race.

Source: Indiana State Department of Health, Maternal & Child Health Epidemiology Division [October 26, 2015]

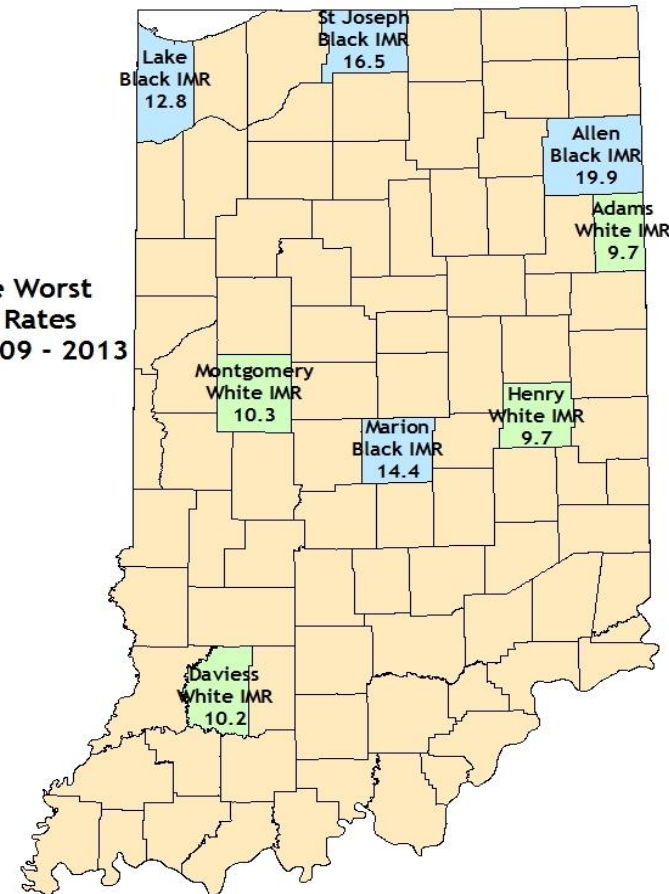
Indiana Original Source: Indiana State Department of Health, PHPC, ERC, Data Analysis Team

Infant Mortality Rates County Level, by Race 2009 - 2013

Black Infant Mortality

- Worst counties for combined years:
 - Allen County
 - (Black IMR = 19.9)
 - St. Joseph County
 - (Black IMR = 16.5)
 - Marion County
 - (Black IMR = 14.4)
 - Lake County
 - (Black IMR = 12.8)
- These 4 counties account for nearly **80% of all the black infant deaths** in Indiana between 2009 and 2013

Counties With the Worst
Infant Mortality Rates
Aggregated Years 2009 - 2013
by Race



Source: Indiana State Department of Health
Division of Maternal and Child Health Epidemiology
October 28, 2015

Infant Mortality Rates by Zip Code 2009 - 2013 Combined, by Race

**Zip codes with the highest Infant Mortality Rate for the 5 years among zip codes that had at least 20 infant deaths for each race.*

Zip Codes with Worst White Infant Mortality

Zip Code	County	# Total White Infant Deaths	White Infant Mortality Rate
46112	Hendricks	21	10.7
46203	Marion	28	10.3
46368	Porter	20	10.1
46350	LaPorte	21	8.7
46227	Marion	28	8.1

Zip Codes with Worst Black Infant Mortality

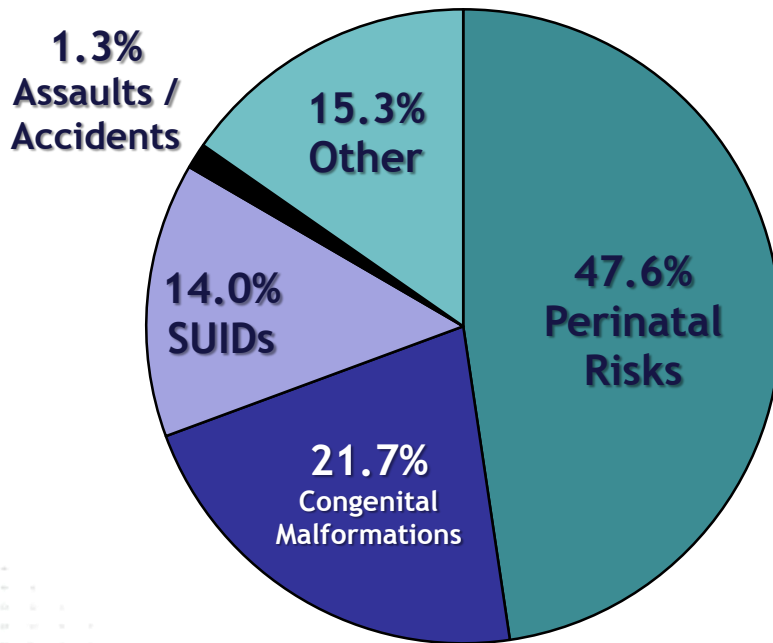
Zip Code	County	# Total Black Infant Deaths	Black Infant Mortality Rate
46312	Lake	33	26.6
46201	Marion	22	26.1
46806	Allen	29	25.6
46226	Marion	40	18.9
46222	Marion	22	17.7
46205	Marion	22	16.7
46218	Marion	30	16.2
46235	Marion	22	11.3



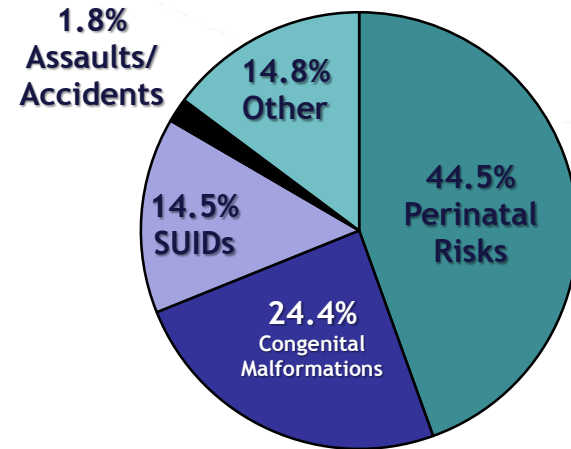
CAUSES OF INFANT MORTALITY IN INDIANA

Infant Mortality Distribution by Cause Indiana 2013

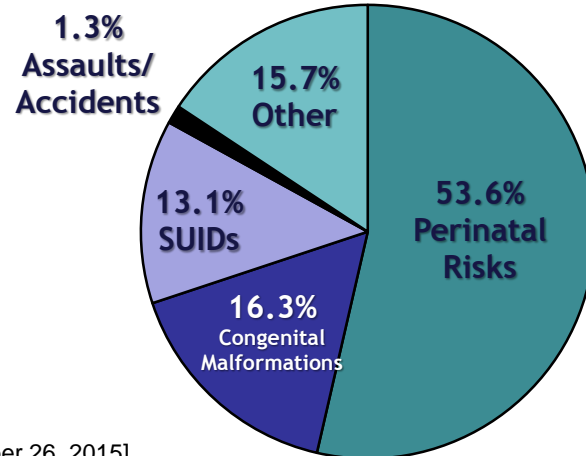
Indiana, All Races
N = 594



Indiana, Whites
N = 393



Indiana, Blacks
N = 153

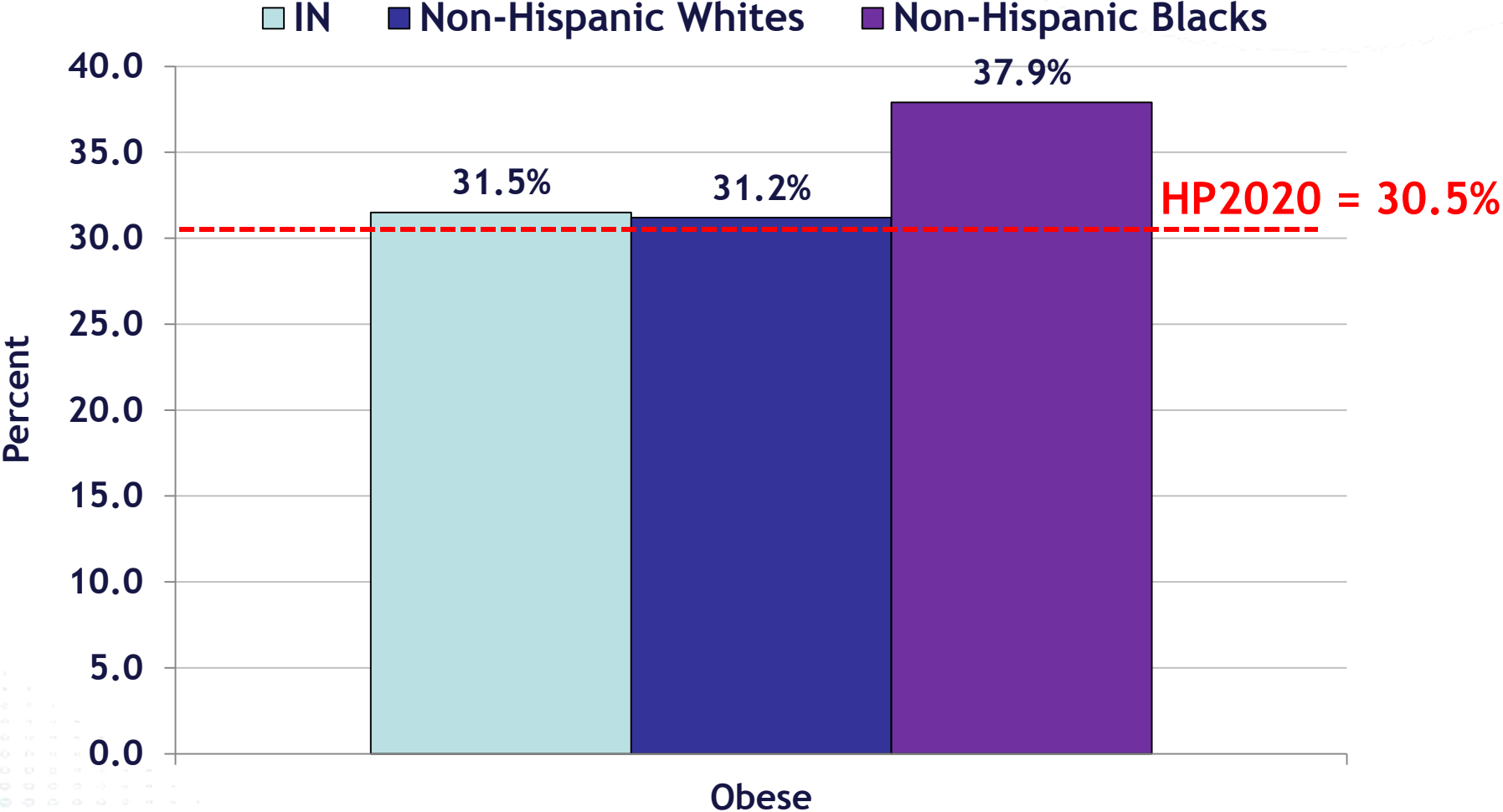


Factors Contributing to Infant Mortality in Indiana

- **Obesity (ISDH #2 Priority)**
 - If woman is obese = 25% chance of delivering premature infant
 - If woman is morbidly obese = 33% chance of delivering premature infant
 - Indiana is *9th most obese state in U.S.*
- **Smoking (ISDH #3 Priority)**
 - 15.7% of mothers smoke during pregnancy (*TWICE the U.S. average*)
 - 25.9% of mothers on Medicaid smoke
 - Indiana has *7th worst* smoking rate among pregnant women in U.S.
 - Indiana has *12th highest* smoking rate overall in U.S.
- **Limited Prenatal Care**
 - Only 67.4% of mothers receive prenatal care during the 1st trimester
- **Unsafe Sleep Practices**
 - **14.0%** of infant deaths in 2013 can be attributed to *SUIDs*

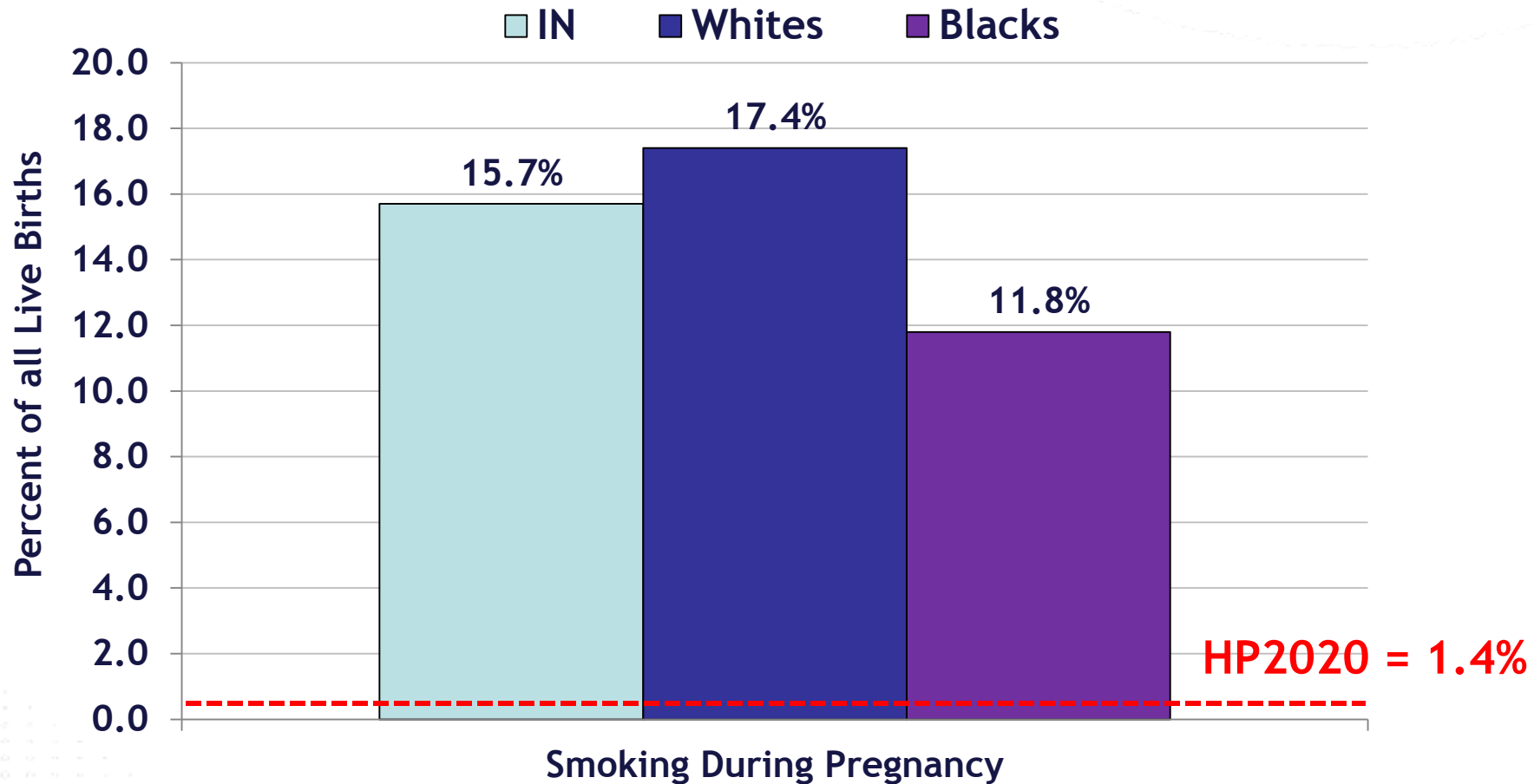


Percent of Women Ages 18-44 Who are Obese (BMI \geq 30) Indiana, 2014



Source: Indiana State Department of Health, Division of Nutrition and Physical Activity, BRFSS 2014 [October 26, 2015]

Percent of Mother's Who Smoked Anytime During Pregnancy 2013

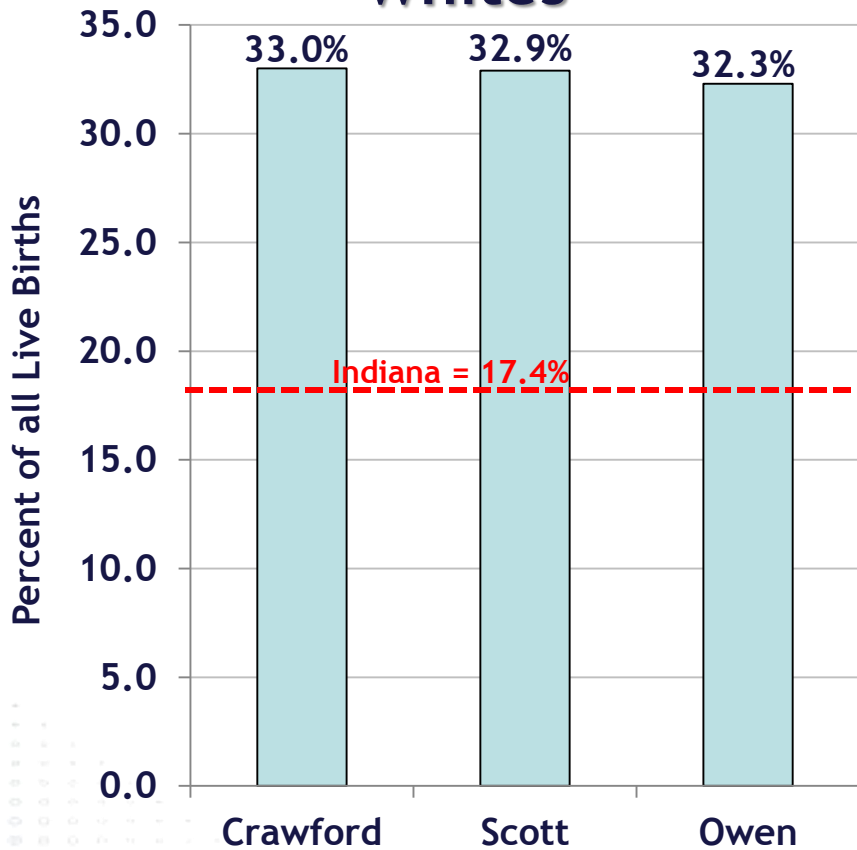


Percent of Mother's Who Smoked Anytime During Pregnancy, by Race

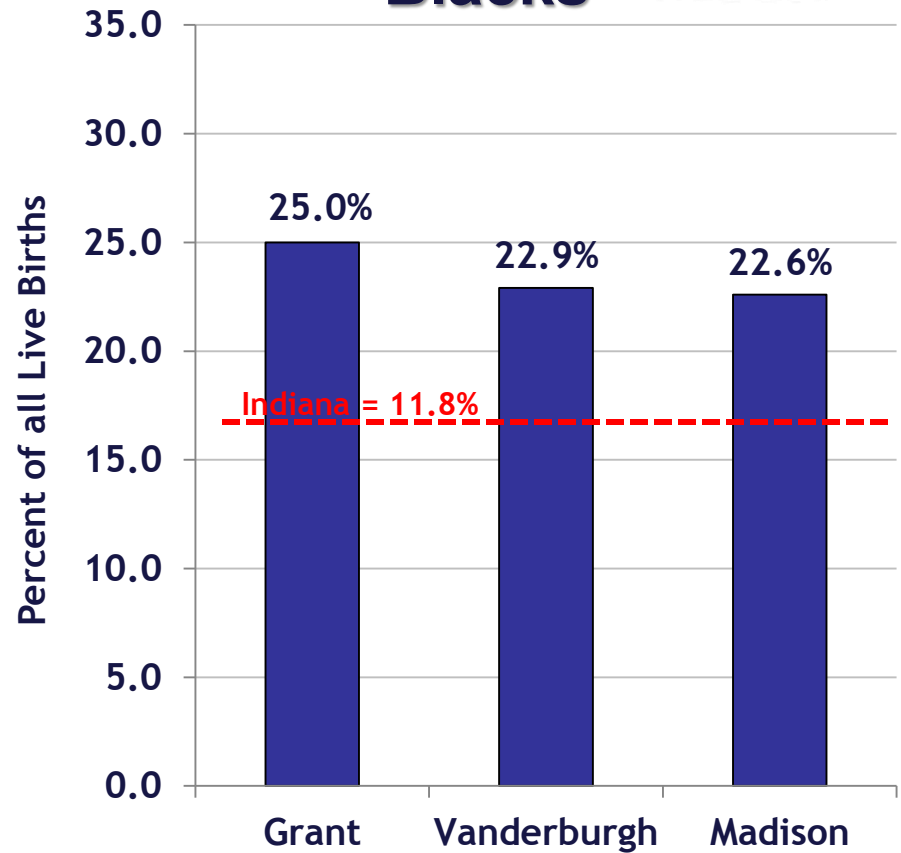
3 Worst Counties

2013

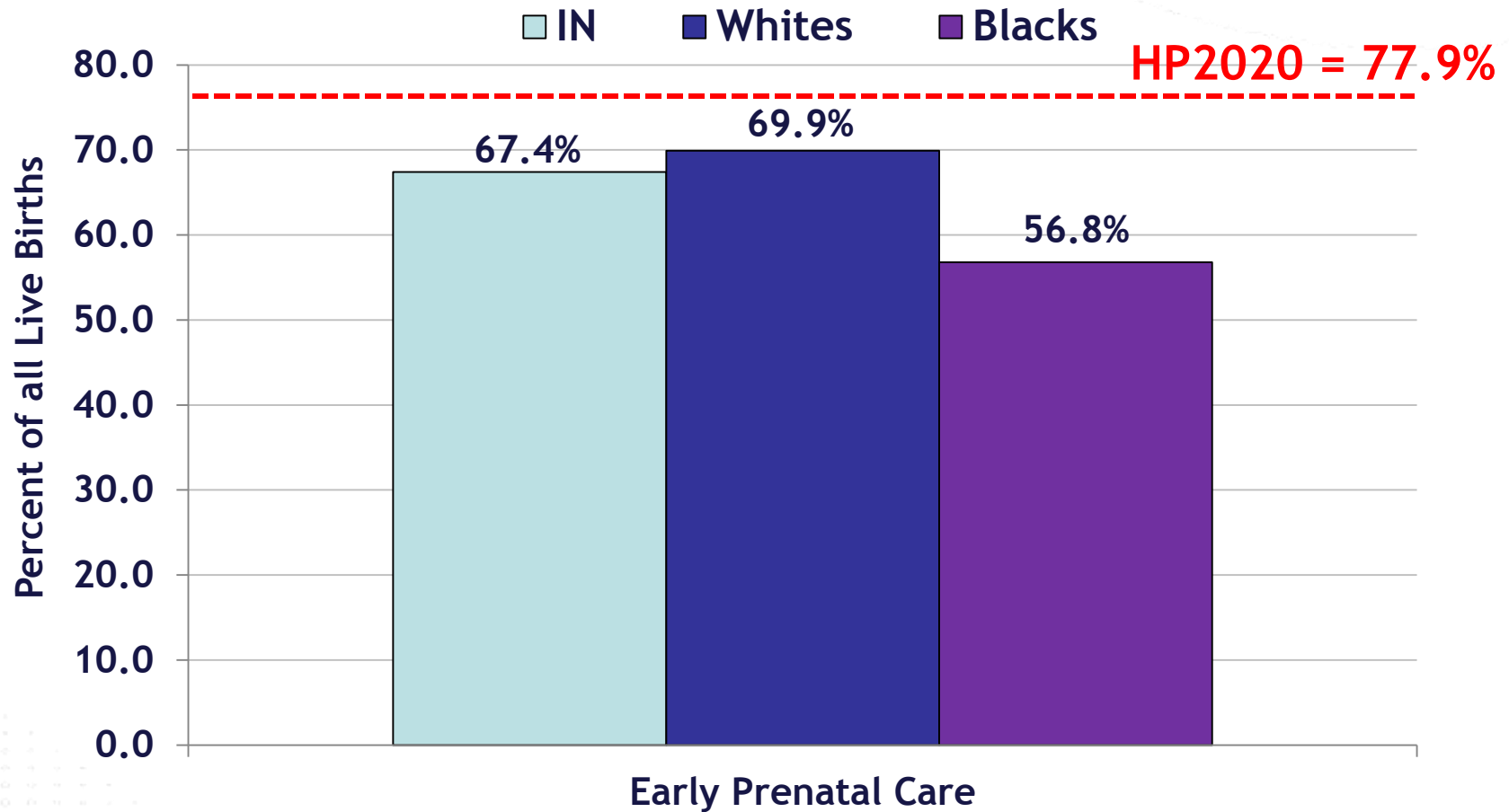
Whites



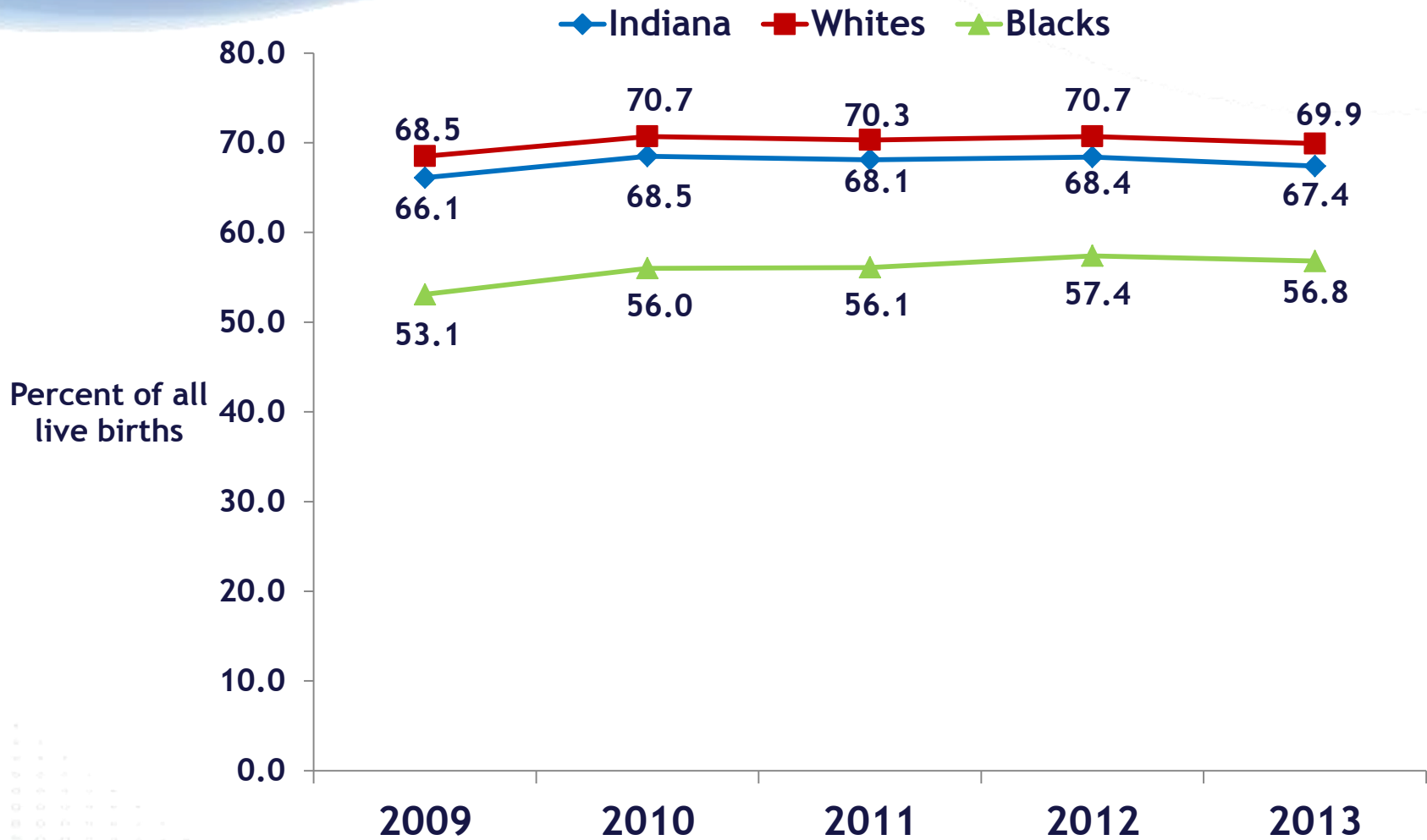
Blacks



Percent of Mother's Who Received Prenatal Care in the 1st Trimester 2013

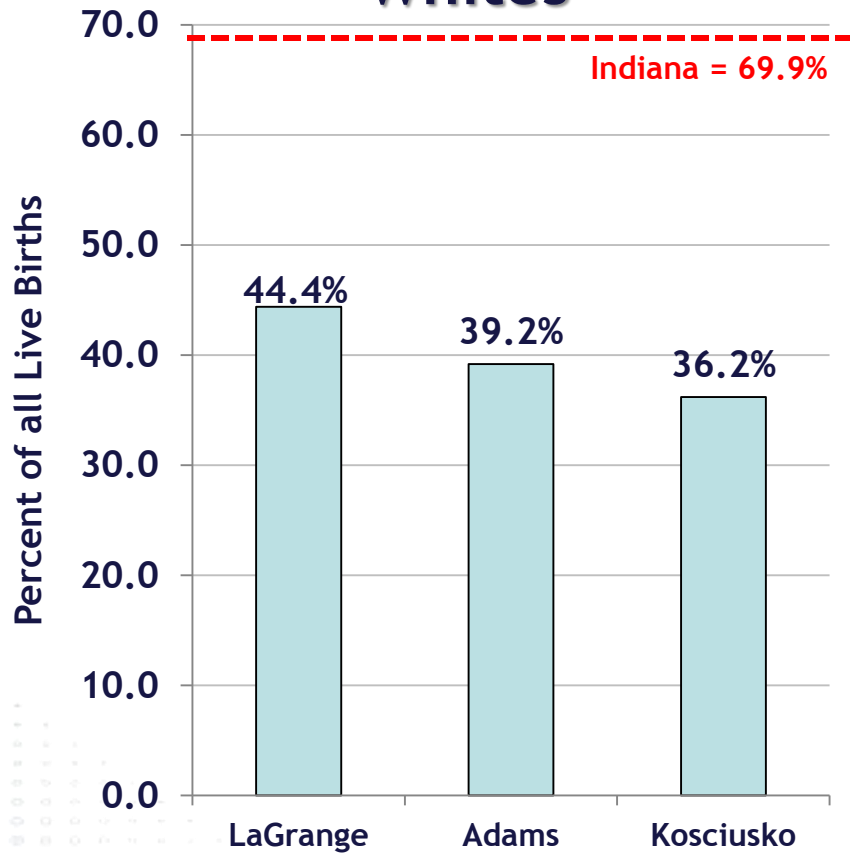


% Women Receiving PNC 1st Trimester Indiana, by Race 2009 - 2013

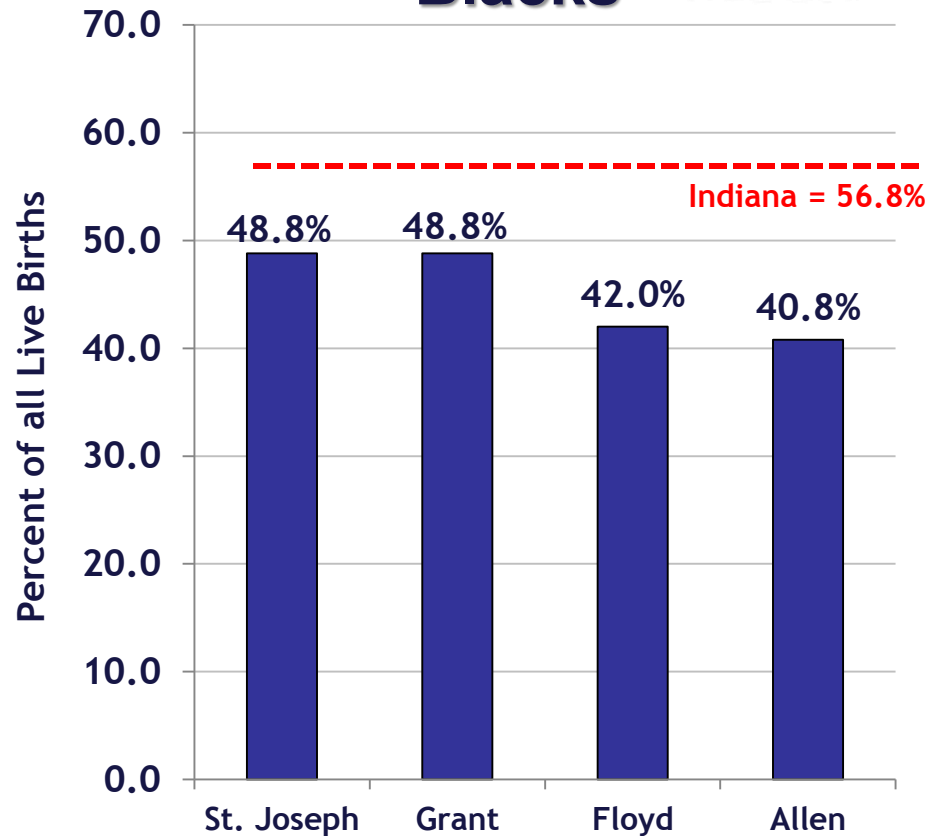


Percent of Mother's Who Received Prenatal Care in the 1st Trimester, by Race Worst Counties 2013

Whites



Blacks



Closing the Disparity Gap

- If Indiana brought its Black infant mortality rate (15.3 in 2013) down to the State's infant mortality rate of 7.15, *82 additional black infants would have lived to see their first birthday.*
- If Indiana's Black infant mortality rate were the same as the white infant mortality rate (5.8), *96 additional black infants would have lived to see their first birthday.*



Closing the Disparity Gap

- If the counties with the worst infant mortality rates lowered their combined infant mortality rate to Indiana's rate, *253 babies in those 11 counties would have lived to see their first birthday.*
- If the 10 zip codes with the worst infant mortality rates would lower the rate to Indiana's, *165 additional babies born in those areas would have survived.*



Infant Mortality

One baby dies
approximately every
13 hours
in Indiana.



Your actions do make a difference. Visit www.LaborofLove.in.gov or call 211 to learn more.



Labor of Love
Helping Indiana Reduce Infant Death